



AUTORITÀ DI BACINO DEL FIUME PO
PARMA

Progetto di Piano stralcio per l'Assetto Idrogeologico del Delta (PAI Delta)

Legge 18 maggio 1989, n. 183, art. 17, comma 6-ter

Adottato dal Comitato Istituzionale

con deliberazione n° 26 del 18 dicembre 2001

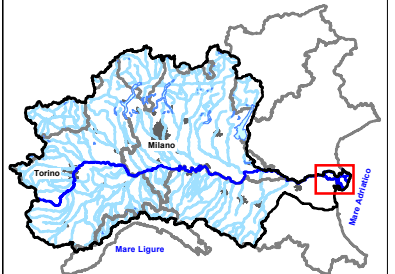
Allegato 5 alla Relazione generale
Analisi del rischio residuale





AUTORITA' DI BACINO DEL FIUME PO
PARMA

**Progetto di Piano stralcio
per l'Assetto Idrogeologico
del Delta
(PAI-Delta)**



Legge 18 Maggio 1989, n. 183,
art. 17, comma 6-ter
Adottato dal Comitato Istituzionale
con deliberazione n° 26
del 18 dicembre 2001

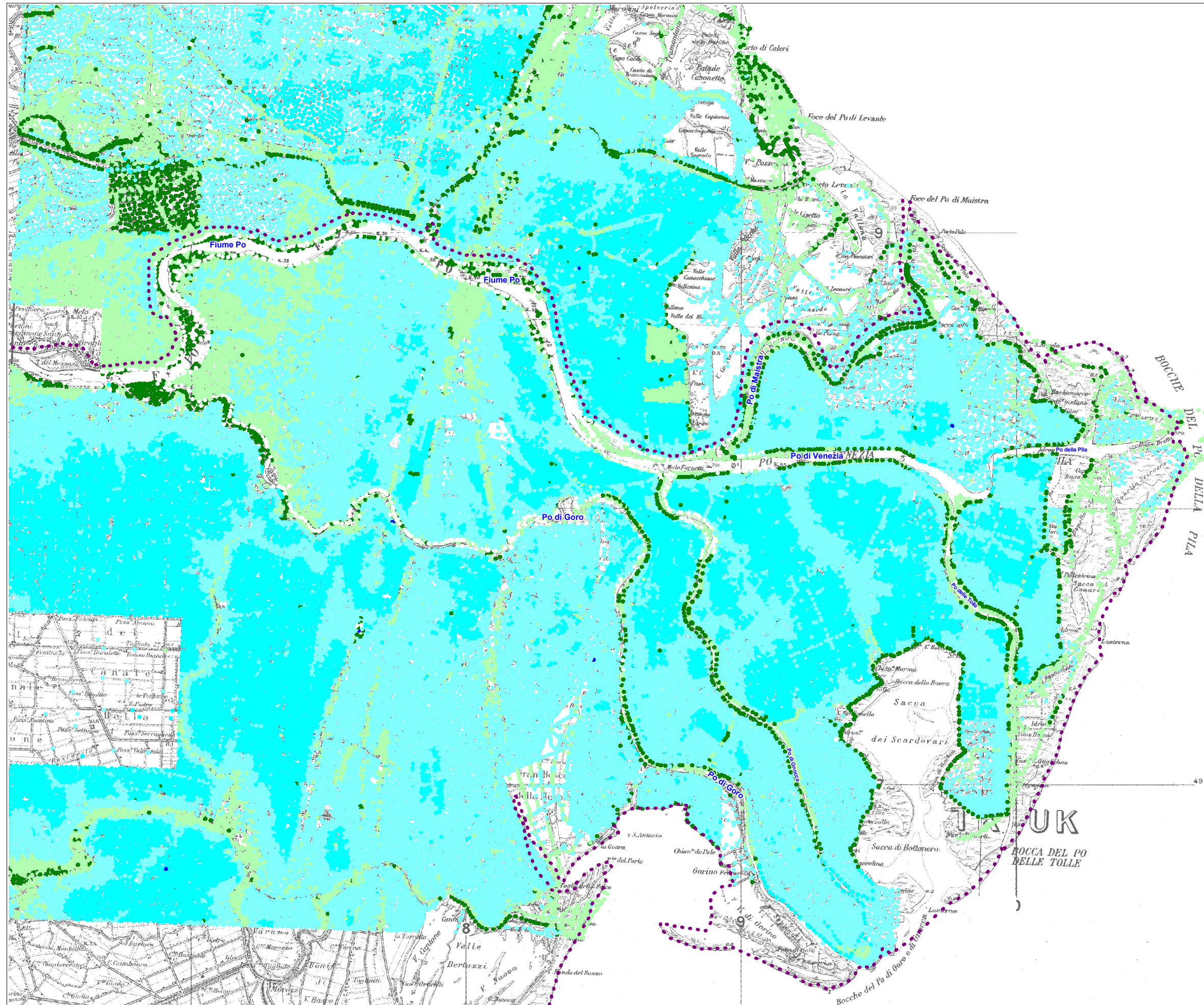
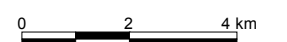
Allegato alla Relazione Generale
Analisi del rischio residuale

- Limite di bacino
- da -10 m a -5 m
- da -5 m a -2,5 m
- da -2,5 m a 0 m
- da 0 m a 2,5 m
- da 2,5 m a 5 m

Tav. 1

Piano quotato

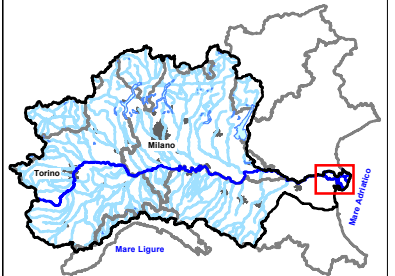
Scala 1:140.000





AUTORITA' DI BACINO DEL FIUME PO
PARMA

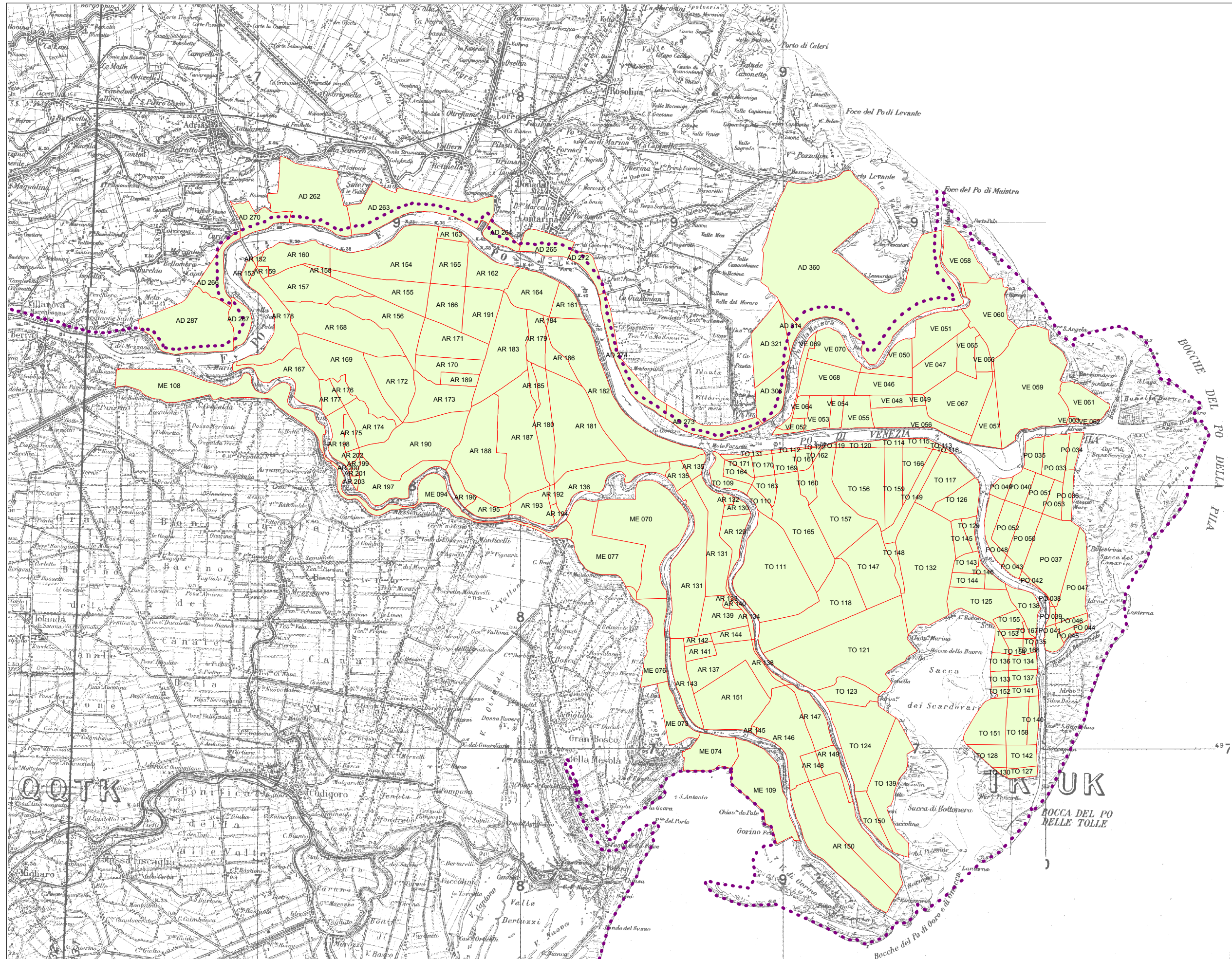
Progetto di Piano stralcio per l'Assetto Idrogeologico del Delta (PAI-Delta)



Legge 18 Maggio 1989, n. 183,
art. 17, comma 6-ter
Adottato dal Comitato Istituzionale
con deliberazione n° 26
del 18 dicembre 2001
Allegato alla Relazione Generale

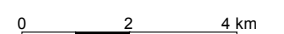
Analisi del rischio residuale

- Limite di bacino
- Celle di suddivisione delle isole deltizie



Tav. 2
Codici identificativi
delle celle di suddivisione
delle isole deltizie

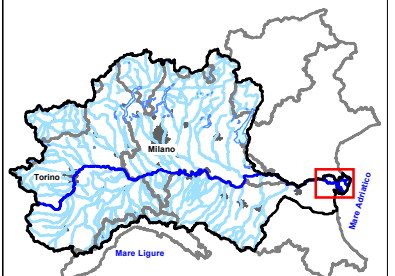
Scala 1:140.000










AUTORITA' DI BACINO DEL FIUME PO
PARMA

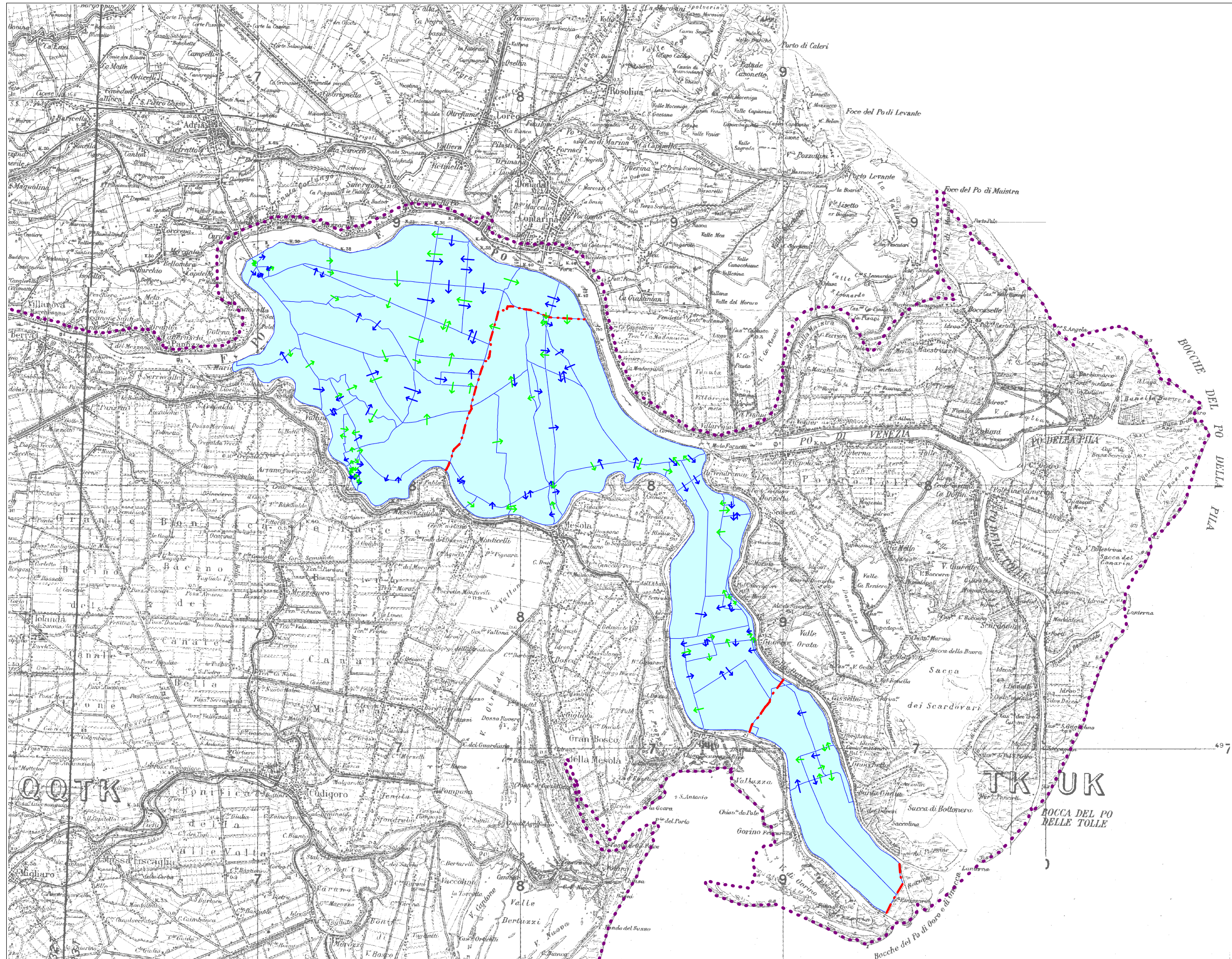
Progetto di Piano stralcio per l'Assetto Idrogeologico del Delta (PAI-Delta)



Legge 18 Maggio 1989, n. 183,
art. 17, comma 6-ter
Adottato dal Comitato Istituzionale
con deliberazione n° 26
del 18 dicembre 2001
Allegato alla Relazione Generale

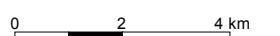
Analisi del rischio residuale

-  Limite di bacino
-  Celle di suddivisione
-  Direzione di flusso principale
-  Direzione di flusso secondario
-  Difese arginali interne



Tav. 3
Direzioni di sfioro
tra celle contigue
Isola di Ariano

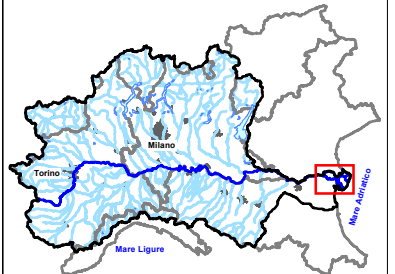
Scala 1:140.000





AUTORITA' DI BACINO DEL FIUME PO
PARMA

Progetto di Piano stralcio per l'Assetto Idrogeologico del Delta (PAI-Delta)

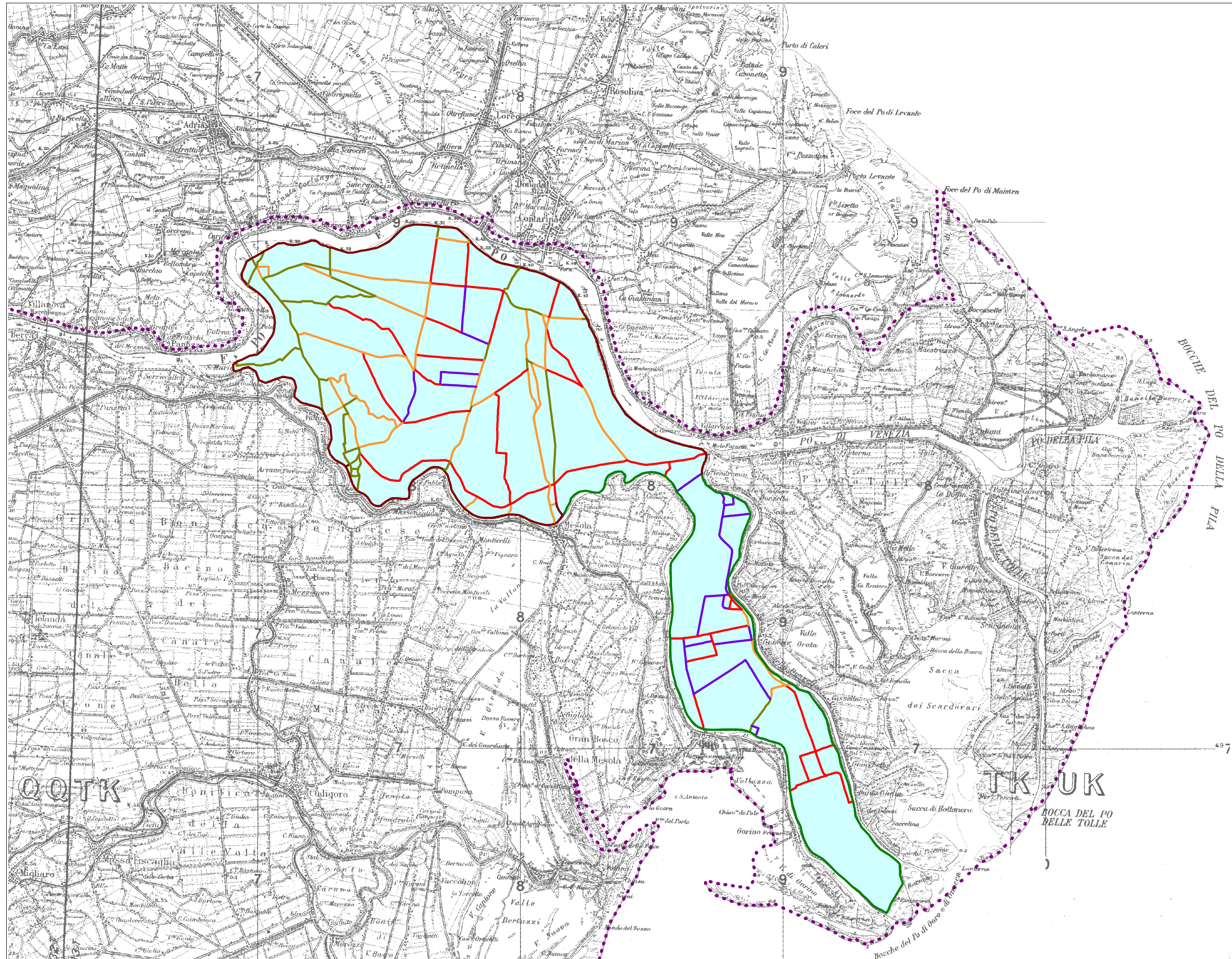
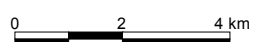


Legge 18 Maggio 1989, n. 183,
art. 17, comma 6-ter
Adottato dal Comitato Istituzionale
con deliberazione n° 26
del 18 dicembre 2001
Allegato alla Relazione Generale
Analisi del rischio residuale

- Limite di bacino
- Cella di suddivisione dell'Isola di Ariano
- da -3,3 m a -2 m
- da -2 m a -1 m
- da -1 m a 0 m
- da 0 m a 3 m
- da 3 m a 6 m
- da 6 m a 10 m

Tav. 4
Altezza minima dei rilevati di delimitazione delle celle

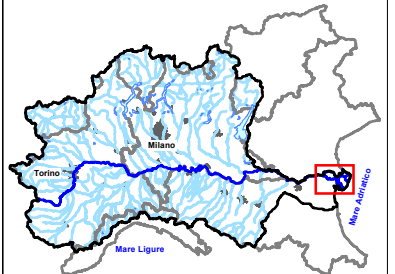
Scala 1:140.000





AUTORITA' DI BACINO DEL FIUME PO
PARMA

Progetto di Piano stralcio per l'Assetto Idrogeologico del Delta (PAI-Delta)



Legge 18 Maggio 1989, n. 183,
art. 17, comma 6-ter
Adottato dal Comitato Istituzionale
con deliberazione n° 26
del 18 dicembre 2001

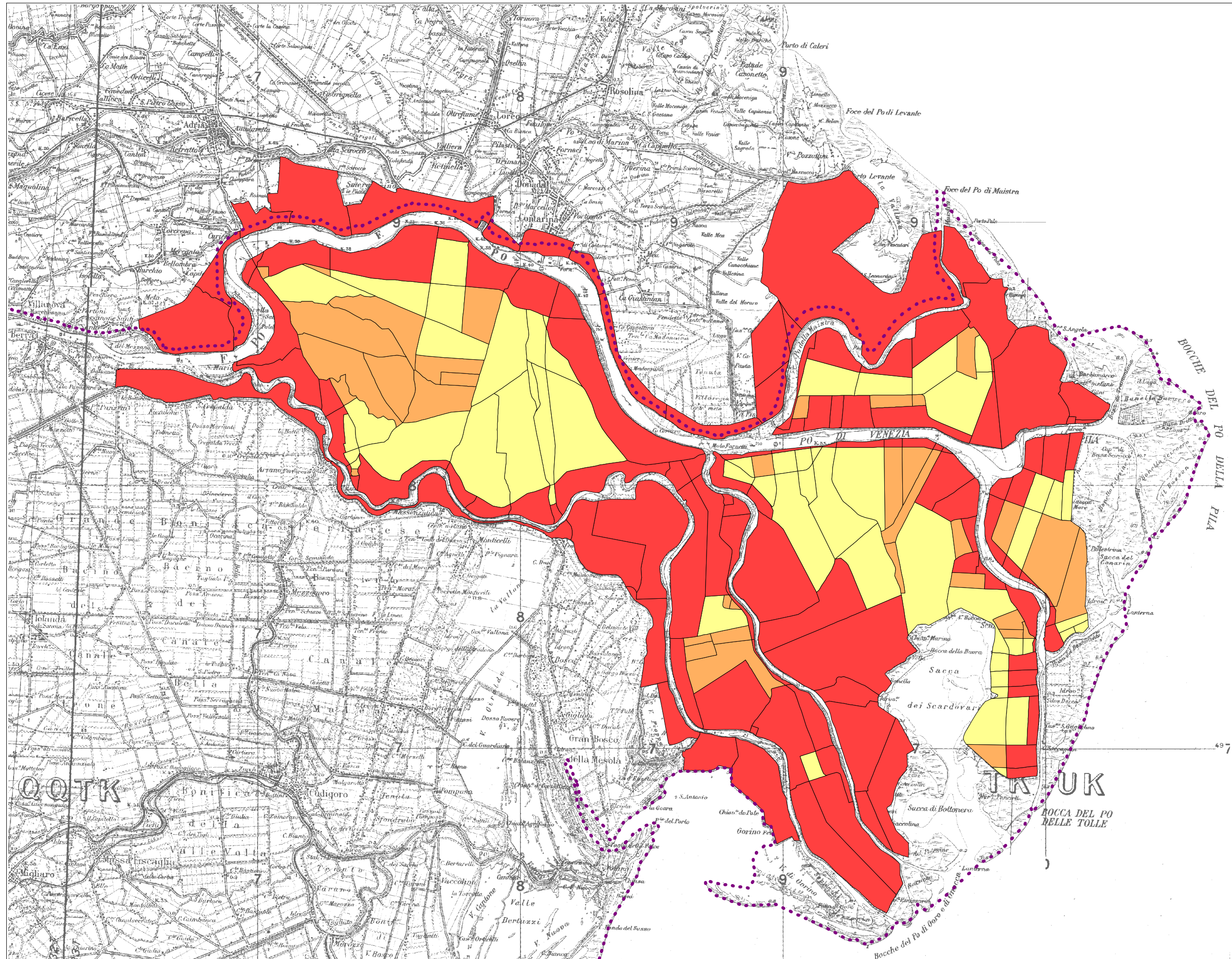
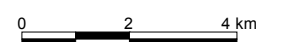
Allegato alla Relazione Generale
Analisi del rischio residuale

- Limite di bacino
- Celle limitrofe agli argini di Po
- molto elevata
- Celle interne alle isole deltizie
- elevata
- media

Tav. 5

Classi di pericolosità

Scala 1:140.000



ANALISI DI VULNERABILITA' PER CELLE

Cella	Ordine	Sup (ha)	Rilevato 1		Rilevato 2		Quote dichiarate		Quote calcolate			Quota media argine Po	Indice
			Quota	Cella adiacente	Quota	Cella adiacente	Minima	Massima	Minima	Massima	Media		
AD 262	1	584.17	-1.45	AD 403	-0.42	AD 270	-2.50	8.34	-2.51	8.33	-0.85	9.13	0.99
AD 263	1	549.04	0.02	AD 349	0.27	AD 262	-3.13	11.80	-2.98	7.88	0.08	8.24	0.90
AD 264	1	74.96	-1.50	AD 297	-0.30	AD 265	-2.70	7.79	-2.80	7.83	-1.02	7.44	0.92
AD 265	1	150.94	-1.02	AD 402	-0.70	AD 351 - AD 398	-2.30	10.68	-2.30	10.68	0.25	7.44	0.86
AD 266	1	150.96	0.09	AD 287	0.50	AD 392	-2.00	7.47	-1.70	5.00	-0.26	9.26	0.97
AD 267	1	109.15	1.26	AD 287	1.40	AD 266	0.00	9.90	-0.09	9.90	1.55	9.61	0.90
AD 270	1	149.05	-3.20	AD 377	-1.90	AD 392	-3.00	8.90	-4.20	5.40	1.14	9.27	0.90
AD 272	1	77.58	-2.00	AD 274	-1.71	AD 404	-4.50	11.16	-4.00	7.42	-1.23	7.44	0.93
AD 273	1	171.12	-2.15	AD 301	-1.53	AD 307 - AD 294	-3.20	6.45	-5.70	6.20	-1.72	5.91	0.88
AD 274	1	206.46	-2.00	AD 272	-1.90	AD 375	-3.60	7.04	-3.75	6.76	-2.03	6.20	0.91
AD 287	1	644.73	0.09	AD 266	0.30	AD 386	-0.82	10.43	-0.82	9.57	0.61	10.37	0.98
AD 306	1	175.81	-1.40	AD 301	-1.30	AD 321	-2.70	5.70	-3.02	3.20	-2.27	4.99	0.86
AD 314	1	50.82	-0.70	AD 321	-0.60	AD 360	-2.20	2.94	-2.20	2.47	-0.93	4.77	0.78
AD 321	1	303.16	-1.30	AD 306 - AD 301	-0.70	AD 314	-2.00	1.08	-2.00	1.40	-1.01	4.77	0.79
AD 360	1	2714.39	-0.88	AD 301	-0.60	AD 314	-3.30	5.11	-3.38	4.40	-0.15	3.73	0.69
AR 129	1	133.81	-3.30	AR 130	-2.33	AR 131	-3.90	3.42	-4.00	5.50	-2.56	4.78	0.86
AR 130	1	47.34	-3.30	AR 129	-2.70	AR 132	-3.70	2.75	-3.70	5.20	-2.48	5.17	0.88
AR 131	1	320.24	-2.70	AR 139	-2.60	AR 130	-5.10	5.60	-4.80	5.60	-2.67	5.41	0.90
AR 131	1	567.68	-2.70	AR 139	-2.60	AR 130	-5.10	5.60	-4.80	5.60	-2.67	4.72	0.87
AR 132	1	14.52	-2.70	AR 130	-2.57	AR 131	-2.80	2.73	-2.95	5.10	-1.73	5.27	0.85
AR 133	2	13.63	-2.60	AR 139	-2.10	AR 131	-2.80	-1.68	-2.81	-1.80	-2.41	0.00	0.74
AR 134	1	24.69	-2.20	AR 144	-1.22	AR 133	-2.20	3.38	-2.57	1.60	-1.68	4.42	0.80
AR 135	1	53.33	-2.50	AR 131	-2.00	AR 182	-3.90	5.34	-4.60	3.00	-2.74	6.30	0.95
AR 135	1	67.30	-2.50	AR 131	-2.00	AR 182	-3.90	5.34	-4.60	3.00	-2.74	5.07	0.89
AR 136	1	305.85	-1.60	AR 182 - AR 181	-1.30	AR 135	-4.60	11.90	-3.34	2.60	-2.22	5.40	0.88
AR 137	2	340.47	-3.00	AR 151	-2.60	AR 144	-3.00	0.13	-3.25	-0.40	-2.12	0.00	0.74
AR 138	1	19.62	-0.92	AR 137	-0.90	AR 134	-2.30	4.60	-0.09	-0.80	-1.65	4.24	0.79
AR 139	2	182.44	-2.70	AR 131	-2.60	AR 133	-3.40	2.60	-3.40	2.60	-2.55	0.00	0.77
AR 140	2	9.05	-1.70	AR 133 - AR 139	-1.10	AR 134	-2.20	-1.09	-2.20	-1.00	-1.70	0.00	0.76

Cella	Ordine	Sup (ha)	Rilevato 1		Rilevato 2		Quote dichiarate		Quote calcolate			Quota media argine Po	Indice
			Quota	Cella adiacente	Quota	Cella adiacente	Minima	Massima	Minima	Massima	Media		
AR 141	2	64.55	-2.12	AR 143 - AR 142	-1.92	AR 137	-2.40	-1.40	-2.41	-1.40	-2.10	0.00	0.74
AR 142	2	31.97	-2.12	AR 143 - AR 141	-1.50	AR 144	-2.70	-1.50	-2.65	-1.30	-2.32	0.00	0.76
AR 143	1	175.69	-2.40	AR 137	-2.12	AR 141	-3.90	4.01	-3.90	4.20	-1.93	4.13	0.80
AR 144	2	72.95	-2.60	AR 137	-2.20	AR 134	-2.80	-1.09	-2.96	-0.89	-2.43	0.00	0.75
AR 145	1	7.24	-2.50	AR 146	1.60	AR 151	0.00	3.70	-2.94	0.00	0.00	3.94	0.69
AR 146	1	440.70	-2.50	AR 145	-1.70	AR 150	-3.20	3.70	-3.20	3.70	-2.06	3.94	0.80
AR 147	1	168.63	-1.53	AR 146	-1.20	AR 149	-2.50	4.02	-3.14	4.10	-1.97	4.01	0.80
AR 148	2	62.28	-1.50	AR 150	-1.30	AR 149 - AR 146	-2.10	2.10	-2.20	2.10	-1.78	0.00	0.77
AR 149	1	99.40	-1.30	AR 148	-1.20	AR 150 - AR 147	-2.80	2.85	-2.80	0.80	-1.70	3.92	0.78
AR 150	1	481.14	-1.70	AR 146	-1.50	AR 148	-3.40	4.10	-2.70	2.30	-1.63	3.82	0.77
AR 150	1	576.82	-1.70	AR 146	-1.50	AR 148	-3.40	4.10	-2.70	2.30	-1.63	3.94	0.77
AR 151	1	498.97	-3.00	AR 137	-1.80	AR 143	-3.20	3.90	-3.60	3.88	-2.29	3.94	0.81
AR 152	1	9.89	2.00	AR 160	2.60	AR 153	-1.30	7.82	-1.30	1.70	1.10	9.84	0.93
AR 153	1	30.43	1.80	AR 178	2.60	AR 152	0.70	10.10	0.39	10.10	2.08	9.30	0.86
AR 154	1	571.06	-1.05	AR 165	-0.25	AR 155	-2.00	7.01	-2.00	7.20	-0.28	8.31	0.93
AR 155	2	281.27	-0.96	AR 166	-0.30	AR 156	-2.20	1.20	-2.25	1.20	-0.55	0.00	0.81
AR 156	3	358.53	-1.80	AR 168	-1.00	AR 171 - AR 170	-2.30	1.90	-2.30	1.90	-0.70	0.00	0.76
AR 157	2	337.96	-0.10	AR 158	0.00	AR 156	-1.30	1.10	-1.30	1.60	-0.04	0.00	0.81
AR 158	2	17.49	-0.10	AR 157	0.00	AR 155	-0.30	1.18	-0.34	0.40	-0.07	0.00	0.74
AR 159	2	14.67	-0.80	AR 178	-0.20	AR 160	-0.30	1.92	-0.71	0.10	-0.15	0.00	0.72
AR 160	1	234.76	-0.20	AR 159	0.20	AR 154	-1.13	7.41	-1.13	3.90	0.04	9.34	0.96
AR 161	1	114.27	-1.10	AR 164	-0.50	AR 182	-4.20	7.00	-4.20	4.00	-2.03	6.98	0.95
AR 162	1	216.07	-1.40	AR 191 - AR 165	0.24	AR 164	-2.30	5.71	-2.30	7.90	-0.80	7.33	0.90
AR 163	1	47.42	-0.28	AR 165	0.02	AR 154	-1.40	5.11	-1.40	7.20	0.17	7.53	0.86
AR 164	1	252.30	-1.10	AR 161	-0.50	AR 184	-2.10	6.98	-2.46	9.00	0.11	7.12	0.85
AR 165	2	218.56	-1.40	AR 162 - AR 166	-1.05	AR 154	-2.60	1.10	-2.60	1.10	-1.71	0.00	0.81
AR 166	3	212.06	-2.20	AR 191	-1.90	AR 171	-2.90	-0.10	-2.90	0.20	-2.02	0.00	0.77
AR 167	1	276.05	0.30	AR 178 - AR 177	0.50	AR 169	-1.10	10.40	-1.24	10.10	0.46	9.51	0.95
AR 168	2	514.15	-1.80	AR 156	-0.80	AR 172	-2.30	1.50	-2.30	1.50	-0.23	0.00	0.76
AR 169	2	473.95	-1.88	AR 172	-0.80	AR 174	-2.30	3.80	-2.30	3.80	-0.58	0.00	0.75
AR 170	3	171.27	-2.80	AR 189	-1.72	AR 171	-3.00	4.00	-3.02	4.00	-1.75	0.00	0.74

Cella	Ordine	Sup (ha)	Rilevato 1		Rilevato 2		Quote dichiarate		Quote calcolate			Quota media argine Po	Indice
			Quota	Cella adiacente	Quota	Cella adiacente	Minima	Massima	Minima	Massima	Media		
AR 171	3	279.58	-2.50	AR 191	-1.90	AR 166	-3.00	8.70	-3.11	8.70	-1.72	0.00	0.77
AR 172	3	297.74	-3.00	AR 173	-1.88	AR 169	-2.50	2.00	-2.68	2.00	-1.47	0.00	0.70
AR 173	3	296.97	-3.00	AR 172	-2.09	AR 189	-2.90	10.10	-2.97	10.10	-1.53	0.00	0.72
AR 174	2	194.45	-0.80	AR 169	-0.20	AR 175	-2.00	1.16	-2.00	0.80	-0.61	0.00	0.81
AR 175	2	55.49	-0.20	AR 174	0.00	AR 198	-1.70	1.19	-1.70	1.10	0.01	0.00	0.83
AR 176	2	52.18	-0.40	AR 177	-0.29	AR 169	-0.80	1.15	-0.83	0.60	-0.26	0.00	0.75
AR 177	1	79.49	-0.50	AR 198	-0.40	AR 176	-1.00	6.54	-1.00	6.30	0.23	8.46	0.91
AR 178	1	289.72	-0.80	AR 159	0.30	AR 167	-1.50	9.70	-1.50	9.62	0.62	9.33	0.93
AR 179	2	137.39	-0.60	AR 186	-0.59	AR 184	-2.30	1.50	-2.30	1.50	-0.97	0.00	0.84
AR 180	3	221.67	-1.31	AR 181	-1.10	AR 192	-3.00	2.10	-3.00	2.10	-1.48	0.00	0.84
AR 181	2	659.48	-2.00	AR 186	-1.60	AR 136	-4.00	3.34	-4.00	3.20	-2.43	0.00	0.87
AR 182	1	875.98	-2.00	AR 135 - AR 186	-1.60	AR 136	-5.00	6.21	-5.00	6.30	-2.42	6.25	0.93
AR 183	2	481.90	-1.62	AR 187	-1.16	AR 191	-2.40	3.70	-2.45	3.70	-0.31	0.00	0.78
AR 184	2	5.72	-0.70	AR 182	-0.59	AR 179	-1.40	-0.25	-1.40	-0.60	-1.01	0.00	0.77
AR 185	3	41.32	-1.00	AR 180	-0.20	AR 187	-3.10	0.80	-3.10	0.80	-1.38	0.00	0.87
AR 186	2	99.88	-2.00	AR 182 - AR 181	-0.60	AR 179	-2.70	1.10	-2.90	1.10	-1.78	0.00	0.79
AR 187	2	622.42	-1.70	AR 193	-1.62	AR 183	-3.60	1.90	-3.60	1.90	-1.62	0.00	0.86
AR 188	2	591.92	-1.55	AR 196	-1.20	AR 187	-5.40	3.80	-5.40	3.80	-1.78	0.00	1.00
AR 189	3	67.56	-2.80	AR 170	-2.09	AR 173	-2.80	1.60	-2.85	1.50	-2.07	0.00	0.73
AR 190	2	589.74	-1.60	AR 197	-1.20	AR 173	-3.80	7.00	-3.80	7.00	-1.79	0.00	0.88
AR 191	2	248.66	-2.50	AR 171	-2.20	AR 166	-2.80	2.10	-2.80	2.10	-1.97	0.00	0.74
AR 192	2	17.89	-1.10	AR 180 - AR 136	-0.60	AR 193	-2.30	-0.14	-2.30	0.00	-1.12	0.00	0.81
AR 193	1	153.41	-1.70	AR 187	-1.00	AR 195	-3.70	7.75	-3.70	7.30	-1.67	6.83	0.92
AR 194	1	19.14	-0.60	AR 193	-0.20	AR 192	-1.70	5.38	-1.67	2.60	-0.70	6.48	0.86
AR 195	1	78.40	-1.08	AR 188	-1.00	AR 193	-2.30	7.60	-2.30	7.56	-0.82	7.30	0.90
AR 196	1	75.77	-1.55	AR 188	-0.60	AR 195	-3.80	8.89	-3.50	8.40	-0.34	7.63	0.89
AR 197	1	261.06	-1.60	AR 190	0.10	AR 203	-2.90	8.93	-2.90	8.70	-0.04	8.21	0.91
AR 198	1	113.11	-0.50	AR 177	0.00	AR 175	-0.70	12.06	-0.70	8.70	0.76	8.43	0.88
AR 199	2	11.68	0.40	AR 197	0.90	AR 201 - AR 202	-0.50	7.23	-0.60	0.40	-0.13	0.00	0.79
AR 200	1	5.52	0.50	AR 203	0.90	AR 201	0.70	10.68	0.40	8.80	3.42	8.40	0.75
AR 201	2	7.20	0.28	AR 203 - AR 197	0.90	AR 199 - AR 200	-0.10	1.10	-0.10	1.10	0.39	0.00	0.75

Cella	Ordine	Sup (ha)	Rilevato 1		Rilevato 2		Quote dichiarate		Quote calcolate			Quota media argine Po	Indice
			Quota	Cella adiacente	Quota	Cella adiacente	Minima	Massima	Minima	Massima	Media		
AR 202	2	22.01	0.80	AR 198	0.90	AR 175 - AR 199 - AR 190	-0.10	5.00	-0.15	1.10	0.40	0.00	0.79
AR 203	1	12.15	0.10	AR 197	0.28	AR 201	-1.00	7.02	-1.19	0.80	-0.30	8.40	0.93
ME 070	1	822.74	0.00		0.00		-3.06	0.00	0.00	5.71	-2.08	5.12	0.86
ME 073	1	160.79	0.00		0.00		-3.65	0.00	0.00	3.63	-1.88	4.37	0.81
ME 074	1	231.45	0.00		0.00		-2.66	0.00	0.00	3.26	-1.89	4.64	0.82
ME 076	1	256.05	0.00		0.00		-3.45	0.00	0.00	1.32	-1.99	4.30	0.81
ME 077	1	486.17	0.00		0.00		-2.88	0.00	0.00	2.28	-1.94	6.20	0.90
ME 094	1	273.23	0.00		0.00		-7.31	0.00	0.00	1.70	-1.40	7.52	0.94
ME 108	1	589.27	0.00		0.00		-2.98	0.00	0.00	8.87	-0.44	9.65	1.00
ME 109	1	488.23	0.00		0.00		-2.70	0.00	0.00	3.36	-1.71	4.44	0.80
PO 033	1	153.96	-2.31	PO 053 - PO 036	-2.30	PO 035	-3.00	2.27	-3.31	-1.40	-2.49	3.71	0.81
PO 034	1	60.47	-1.80	PO 036 - PO 033	0.00		-2.90	4.09	-3.03	3.40	-2.15	3.71	0.79
PO 035	1	87.53	-2.30	PO 033	-1.17	PO 051	-3.50	1.95	-3.70	1.90	-2.12	3.95	0.80
PO 036	2	72.60	-2.31	PO 053 - PO 033	-2.30	PO 037	-2.90	1.89	-2.99	0.90	-2.32	0.00	0.77
PO 037	2	437.37	-8.14	PO 047	-2.80	PO 053	-3.90	3.60	-3.94	3.70	-2.35	0.00	0.42
PO 038	1	3.32	-1.80	PO 037	-0.22	PO 039	0.00	3.40	-2.01	0.00	0.00	3.87	0.69
PO 039	1	17.86	-1.50	PO 047	-1.40	PO 041	-2.00	3.60	-2.50	3.60	-1.68	4.00	0.78
PO 040	1	98.88	-2.45	PO 051	-2.17	PO 052	-3.30	3.75	-3.30	-1.20	-2.63	4.19	0.84
PO 041	1	56.82	-2.00	PO 046 - PO 045	-1.40	PO 039	-2.80	3.60	-3.60	3.60	-2.16	3.93	0.80
PO 042	1	13.42	0.41	PO 043	3.00	PO 037	-2.00	3.35	-2.18	-1.60	-1.83	3.87	0.78
PO 043	1	33.09	-1.80	PO 048	0.41	PO 042	-2.20	3.55	-2.12	3.55	-1.60	3.90	0.77
PO 044	3	16.89	-2.10	PO 046	-1.94	PO 045	-2.50	2.18	-3.05	3.56	-0.23	0.00	0.79
PO 045	2	16.90	-2.00	PO 046 - PO 041	-1.94	PO 044	-2.50	3.40	-2.81	3.40	-1.17	0.00	0.78
PO 046	2	40.81	-2.10	PO 044	-2.00	PO 047 - PO 045 - PO 041	-2.60	2.23	-2.69	3.50	-2.08	0.00	0.76
PO 047	2	253.95	-8.14	PO 037	-2.00	PO 046	-2.40	3.09	-2.56	3.80	-1.72	0.00	0.32
PO 048	1	110.81	-2.50	PO 052	-2.09	PO 049	-3.00	9.10	-3.23	9.10	-2.08	4.15	0.81
PO 049	1	46.69	-2.09	PO 048 - PO 040	0.00		-3.00	2.90	-3.00	-2.00	-2.51	4.22	0.83
PO 050	2	159.17	-2.40	PO 052	-2.30	PO 037	-3.10	-1.60	-3.10	-1.60	-2.57	0.00	0.77
PO 051	2	104.13	-2.50	PO 053	-2.45	PO 040	-3.60	-1.07	-3.60	-1.40	-2.74	0.00	0.80
PO 052	2	132.59	-2.50	PO 048	-2.40	PO 050	-3.00	-1.60	-3.00	-1.60	-2.49	0.00	0.76

Cella	Ordine	Sup (ha)	Rilevato 1		Rilevato 2		Quote dichiarate		Quote calcolate			Quota media argine Po	Indice
			Quota	Cella adiacente	Quota	Cella adiacente	Minima	Massima	Minima	Massima	Media		
PO 053	2	75.92	-2.80	PO 037	-2.50	PO 051	-3.30	-1.46	-3.40	-1.20	-2.75	0.00	0.77
TO 109	1	92.87	-3.20	TO 164	-2.10	TO 110	-4.80	6.20	-4.30	5.60	-3.00	6.36	0.96
TO 110	1	55.37	-3.20	TO 163	-3.10	TO 165	-3.60	5.91	-3.60	5.70	-2.16	5.25	0.87
TO 111	1	803.48	-1.40	TO 110 - TO 118	-1.00	TO 165	-3.60	5.50	-3.60	5.60	-2.26	4.74	0.85
TO 112	1	14.74	-2.50	TO 131	-1.70	TO 169	-1.80	3.37	-2.17	5.54	1.79	6.10	0.71
TO 113	1	7.16	-1.70	TO 116	-1.16	TO 115	-1.50	0.71	-2.07	-0.60	-1.06	4.69	0.78
TO 114	1	21.81	-2.63	TO 115 - TO 159	-0.80	TO 120	-2.30	0.60	-2.32	0.60	-1.26	5.15	0.82
TO 115	1	40.59	-2.63	TO 114	-1.16	TO 113	-2.00	2.64	-2.00	0.50	-1.18	4.92	0.80
TO 116	1	4.45	-1.70	TO 113	-0.70	TO 117	-2.56	0.28	-3.69	-0.10	-1.37	4.69	0.80
TO 117	1	245.55	-2.80	TO 132	-2.70	TO 126	-4.20	2.06	-3.45	-0.70	-2.46	4.50	0.84
TO 118	1	535.04	-2.70	TO 147	-1.90	TO 121	-3.50	4.80	-3.56	4.60	-2.52	4.33	0.84
TO 119	1	5.64	-1.90	TO 122 - TO 157	-0.62	TO 120	-1.90	3.11	-2.39	-1.30	-1.65	5.50	0.85
TO 120	1	41.94	-0.80	TO 114	-0.78	TO 156	-2.70	3.07	-2.70	1.50	-1.56	5.36	0.84
TO 121	1	1168.20	-1.90	TO 123 - TO 147 - TO 118	0.00	TO 132	-3.90	4.60	-3.90	4.60	-2.56	3.80	0.81
TO 122	1	1.95	-1.90	TO 119 - TO 162	-1.30	TO 112	-2.50	3.05	-1.40	0.00	-2.70	5.50	0.91
TO 123	1	163.61	-1.90	TO 124 - TO 121	0.00		-2.70	2.59	-2.79	3.80	-1.95	3.80	0.78
TO 124	1	511.97	-2.13	TO 139	-1.90	TO 123	-3.00	1.91	-3.48	3.90	-1.59	3.80	0.77
TO 125	2	281.83	-1.92	TO 154 - TO 153	-1.82	TO 136	-2.80	4.10	-3.36	4.10	-2.14	0.00	0.83
TO 126	1	175.11	-2.79	TO 132	-2.70	TO 117	-3.90	8.50	-3.90	8.50	-2.51	4.43	0.84
TO 127	1	43.95	-1.90	TO 142	0.90	TO 130	-2.40	3.90	-2.93	3.90	-1.97	3.50	0.77
TO 128	2	86.69	-2.40	SACCA SCARDOVARI	-1.90	TO 142 - TO 130	-2.50	5.52	-2.84	3.90	-1.82	0.00	0.75
TO 129	1	47.15	-2.20	TO 145	-1.99	TO 126	-2.70	3.02	-2.70	1.30	-1.96	4.20	0.80
TO 130	2	10.95	-1.90	TO 128	0.90	TO 127	-2.20	3.90	-2.75	3.90	-1.26	0.00	0.78
TO 131	1	31.03	-2.50	TO 112	-2.20	TO 171	-2.50	3.24	-3.07	5.50	-1.36	6.10	0.87
TO 132	2	806.07	-2.80	TO 117	-2.79	TO 126	-4.40	3.70	-4.40	3.60	-2.55	0.00	0.84
TO 133	2	39.58	-2.03	TO 136	-1.80	TO 137	-2.70	3.80	-3.25	3.88	-2.10	0.00	0.81
TO 134	1	64.86	-8.59	TO 137	-2.10	TO 154 - TO 136	-2.90	1.74	-2.90	-0.40	-2.42	3.50	0.79
TO 135	1	4.60	-1.90	TO 168 - TO 167	0.10	TO 138	-1.80	0.67	-2.13	-1.60	-1.70	3.95	0.78
TO 136	2	46.69	-2.10	TO 134	-2.03	TO 133	-2.70	3.80	-2.85	3.80	-2.31	0.00	0.78
TO 137	1	63.77	-8.59	TO 134	-1.80	TO 133	-2.60	0.93	-2.70	2.20	-2.29	3.50	0.79

Cella	Ordine	Sup (ha)	Rilevato 1		Rilevato 2		Quote dichiarate		Quote calcolate			Quota media argine Po	Indice
			Quota	Cella adiacente	Quota	Cella adiacente	Minima	Massima	Minima	Massima	Media		
TO 138	1	122.26	-1.60	TO 167	-1.50	TO 155	-3.00	2.53	-3.07	3.50	-2.04	3.95	0.80
TO 139	1	401.30	-2.13	TO 124	-0.80	TO 150	-2.30	3.36	-3.92	3.90	-1.18	0.00	0.56
TO 140	1	71.80	-1.70	TO 158	-1.37	TO 142	-2.40	1.97	-2.44	-1.10	-1.95	3.50	0.77
TO 141	1	47.31	-1.50	TO 158 - TO 152 - TO 137	-1.20	TO 140	-2.40	1.84	-2.62	3.40	-1.84	3.50	0.76
TO 142	1	98.16	-1.90	TO 128 - TO 127	-1.80	TO 158	-2.50	1.17	-2.78	-1.40	-2.23	3.50	0.78
TO 143	1	65.21	-2.66	TO 145	-2.10	TO 146	-2.90	2.70	-3.14	-1.70	-2.54	0.00	0.62
TO 144	2	71.66	-2.70	TO 132	-2.20	TO 146	-2.80	-1.35	-3.21	-1.59	-2.57	0.00	0.76
TO 145	2	71.94	-2.66	TO 143	-2.60	TO 132	-3.00	2.70	-3.02	-2.00	-2.55	0.00	0.75
TO 146	1	52.03	-2.20	TO 144	-2.10	TO 143	-2.50	0.60	-3.16	0.00	-2.19	3.99	0.81
TO 147	2	411.37	-2.70	TO 118	-1.90	TO 121	-3.90	3.20	-3.90	3.20	-2.74	0.00	0.81
TO 148	3	51.30	-2.10	TO 132	-1.50	TO 147	-2.50	0.48	-2.50	-1.61	-2.03	0.00	0.75
TO 149	2	146.31	-3.01	TO 166 - TO 159	-2.22	TO 156	-3.50	0.73	-3.50	0.75	-2.65	0.00	0.76
TO 150	1	107.53	-0.80	TO 139 - TO 124	0.00		-3.80	4.00	-3.94	-0.90	-1.69	3.84	0.77
TO 151	3	225.79	-1.80	TO 158 - TO 128	-1.50	TO 152	-2.50	5.51	-2.58	3.90	0.91	0.00	0.78
TO 152	2	23.56	-1.50	TO 151 - TO 141 - TO 133	3.70	SACCA SCARDOVARI	-2.60	3.80	-2.69	3.80	-1.54	0.00	0.81
TO 153	3	28.18	-2.20	TO 155	-2.10	TO 167	-2.40	-1.50	-2.45	-2.20	-2.30	0.00	0.74
TO 154	3	38.27	-2.10	TO 134	-2.00	TO 153 - TO 168	-2.70	-1.55	-2.76	-2.20	-2.41	0.00	0.77
TO 155	2	62.13	-2.20	TO 153	-1.70	TO 167	-2.62	-0.04	-2.73	-0.04	-2.21	0.00	0.76
TO 156	2	475.17	-3.02	TO 159	-2.22	TO 149	-4.50	3.10	-4.50	3.10	-2.51	0.00	0.83
TO 157	2	452.83	-2.70	TO 160	-2.60	TO 165	-3.60	0.08	-3.69	-0.20	-2.47	0.00	0.79
TO 158	2	150.13	-1.80	TO 151 - TO 142	-1.70	TO 140	-2.50	1.52	-2.50	1.00	-1.86	0.00	0.77
TO 159	2	190.09	-5.21	TO 166	-3.02	TO 156	-4.30	4.10	-4.31	4.10	-2.88	0.00	0.66
TO 160	3	71.29	-2.70	TO 157	-2.63	TO 165	-3.60	-2.04	-3.60	-2.60	-3.23	0.00	0.79
TO 161	2	46.16	-2.20	TO 160 - TO 169	-1.90	TO 162	-3.20	-1.33	-3.24	-1.70	-2.46	0.00	0.80
TO 162	2	12.54	-1.90	TO 157 - TO 122 - TO 161	0.00		-2.50	-0.86	-2.52	-1.10	-2.07	0.00	0.77
TO 163	2	69.27	-3.20	TO 110	-3.10	TO 165 - TO 164	-4.20	4.00	-4.36	4.00	-3.26	0.00	0.81
TO 164	2	55.63	-3.20	TO 109	-3.10	TO 163	-4.40	-1.79	-4.61	-2.00	-3.77	0.00	0.82
TO 165	2	509.90	-3.10	TO 163 - TO 110	-2.70	TO 169	-3.90	2.00	-3.90	3.20	-2.89	0.00	0.78
TO 166	2	131.04	-5.21	TO 159	-3.01	TO 149	-3.40	1.68	-3.40	-1.40	-2.73	0.00	0.59
TO 167	2	13.78	-2.10	TO 153	-2.00	TO 168	-2.30	-0.90	-2.60	-0.90	-1.73	0.00	0.76

Cella	Ordine	Sup (ha)	Rilevato 1		Rilevato 2		Quote dichiarate		Quote calcolate			Quota media argine Po	Indice
			Quota	Cella adiacente	Quota	Cella adiacente	Minima	Massima	Minima	Massima	Media		
TO 168	2	22.19	-2.00	TO 167 - TO 154	-1.90	TO 135	-2.50	-1.82	-2.84	-2.10	-2.40	0.00	0.78
TO 169	2	70.67	-2.70	TO 165 - TO 170	-2.20	TO 161	-3.50	1.10	-3.56	1.10	-2.38	0.00	0.78
TO 170	2	62.36	-2.70	TO 163 - TO 169	-2.55	TO 171	-3.20	2.70	-3.20	2.70	-2.24	0.00	0.76
TO 171	2	39.13	-2.55	TO 170 - TO 164	-2.20	TO 131	-4.00	-0.30	-4.11	-0.30	-2.87	0.00	0.83
VE 046	2	162.03	-1.90	VE 050 - VE 047	-1.74	VE 048	-2.60	-0.95	-2.60	-1.00	-2.00	0.00	0.77
VE 047	2	218.59	-1.90	VE 051 - VE 046 - VE 050	-1.40	VE 067	-2.80	-0.68	-2.80	-0.83	-1.83	0.00	0.79
VE 048	2	74.24	-3.20	VE 056 - VE 049	-1.80	VE 055	-2.80	2.60	-2.84	2.60	-2.20	0.00	0.70
VE 049	2	20.46	-3.20	VE 056 - VE 048	-1.20	VE 067 - VE 047	-2.50	-1.25	-2.60	-2.00	-2.29	0.00	0.68
VE 050	1	85.82	-2.00	VE 070	-1.90	VE 046 - VE 047 - VE 051	-2.40	3.17	-2.40	1.00	-1.83	3.80	0.78
VE 051	1	272.61	-2.11	VE 065	-1.90	VE 047 - VE 050	-2.40	3.36	-2.40	3.00	-1.01	3.56	0.72
VE 052	1	39.39	-1.70	VE 053 - VE 064	-1.30	VE 069	-2.82	5.70	-2.82	0.40	-1.38	6.20	0.87
VE 053	1	113.21	-2.00	VE 064	-1.92	VE 068	-2.90	5.00	-3.03	-1.10	-2.27	6.20	0.92
VE 054	1	56.52	-2.00	VE 055	-1.90	VE 053	-2.30	4.86	-2.39	-1.10	-1.84	5.84	0.88
VE 055	1	135.09	-2.00	VE 054	-1.90	VE 056	-2.90	4.90	-2.94	1.00	-2.21	5.49	0.88
VE 056	1	221.21	-4.98	VE 057	-3.20	VE 049 - VE 048	-3.70	4.90	-3.70	2.20	-1.86	5.12	0.84
VE 057	1	172.43	-4.98	VE 056	-2.43	VE 067	-9.80	2.50	-9.80	2.50	-1.68	4.16	0.79
VE 058	1	156.82	0.05	VE 060	0.00		-0.50	3.48	-0.74	4.30	1.07	3.00	0.59
VE 059	1	921.91	0.34	VE 057	1.40	VE 060	-3.70	4.20	-3.70	4.30	-0.60	4.18	0.74
VE 060	1	381.70	-1.00	VE 066	-0.91	VE 065	-2.70	3.32	-2.70	4.10	-0.03	3.00	0.65
VE 061	1	181.25	-0.80	VE 062 - VE 063	2.00	VE 059	-2.80	2.92	-3.00	4.30	-1.23	4.24	0.77
VE 062	1	9.90	-0.80	VE 061 - VE 063	0.00		-2.00	3.31	-2.14	3.30	0.24	4.24	0.70
VE 063	1	8.27	-0.80	VE 062 - VE 061	1.90	VE 059	-2.00	2.63	-2.31	-0.80	-1.49	4.24	0.78
VE 064	2	44.18	-2.00	VE 053	-1.90	VE 068	-2.30	-0.25	-2.30	-1.30	-1.64	0.00	0.74
VE 065	2	123.43	-2.11	VE 051	-1.40	VE 066	-2.30	-0.20	-2.30	-0.10	-1.37	0.00	0.74
VE 066	2	70.23	-1.40	VE 065	-1.25	VE 067	-2.20	1.50	-2.20	1.50	-1.50	0.00	0.78
VE 067	2	416.16	-2.43	VE 057 - VE 056	-1.40	VE 047	-3.23	2.60	-3.23	2.60	-2.33	0.00	0.78
VE 068	2	246.01	-2.00	VE 070	-1.92	VE 053	-2.81	1.90	-2.81	1.90	-1.89	0.00	0.78
VE 069	1	68.96	-1.78	VE 068	-1.70	VE 070	-1.80	3.52	-2.27	5.00	-0.73	4.84	0.77
VE 070	1	190.34	-2.00	VE 068 - VE 050	-1.70	VE 069	-2.50	1.95	-2.50	4.70	-1.65	4.50	0.80